

【Quick Install Guide : Smart Bridge 9500N-100_Temperature Detect Mirror】

➤ Product Contents

The contents of the 9500N-100 temperature detect mirror includes the following objects:

- 9500N-100 temperature detect mirror x1 set
- USB power cord x 1 cable
- USB Power Supply 110/240V to 5V USB output x 1 set
- 3M double-sided sticker x2

➤ Prepare Before Use

1. Please take out the temperature detect mirror and 3M double-sided glue sticker then paste to the position you want. Plug in the USB power cord and connect to the power supply.
2. After power-on, OLED-screen will display the booting- screen about 5 to 10 seconds. Enter to temperature measurement mode directly after the display is off.

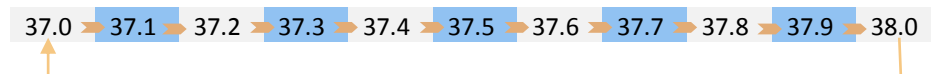
➤ Settings

Three different mode for setting temperature 、temperature unit and alarm sound sequentially. Holding the button with different time for different setting:

1. Alarm temperature adjustment: Hold the button then release it while OLED displays 3~5 to enter the setting. **(Default: 37.5°C)**
2. Celsius/Fahrenheit adjustment: Hold the button then release it while OLED displays 6~9 to enter the setting. **(Default: Celsius)**
3. Alarm sound adjustment: Hold the button then release it while OLED displays 9~11 to enter the setting. **(Default: Speaker On)**

Setup:

1. Press the side-button until OLED displays "3" then release. Display such as 37.0, press again to 37.1 and so on. When the system detects no further pressing within 3 seconds, the current temperature the alarm temperature threshold. **(Figure 1)**



2. Press the side-button until OLED displays "6" then release. Display such as °C and press again for °F. When the system detects no further

pressing within 3 seconds, use the current temperature unit. **(Figure 2)**

3. Press the side-button until OLED displays "9" then release. Display such as "Speaker On" and press again for "Speaker Off". When the system detects no further pressing within 3 seconds, use the current alarm sound setting. **(Figure 3)**

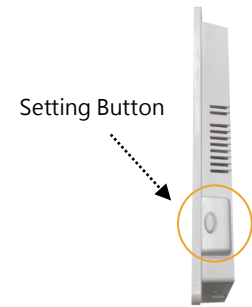
Figure1



Figure2

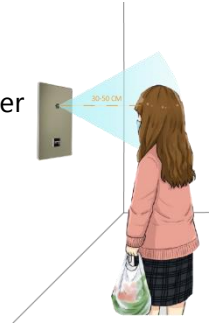


Figure3



➤ Measurement

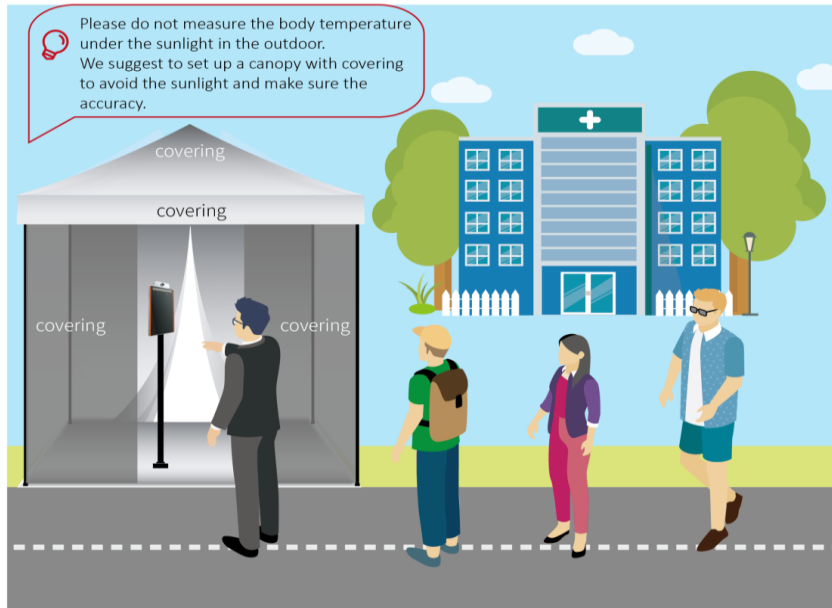
1. The forehead is about 30-50 cm from the center of the sensor.
2. Temperature measurements can be obtained 3 seconds later **(Figure 4)**
3. Get your temperature correctly and you'll hear Bi sound
 - If the temperature is measured higher than setting value, you will hear the "Bi Bi Bi" sound.
 - If the temperature is lower than setting value, you will only hear a beep.



【Quick Install Guide : Smart Bridge 9500N-100_Temperature Detect Mirror】

Remarks

1. The product of temperature detect mirror cannot work under the sunshine. For outdoor usage, it is recommended to set up a scaffold, block ingenuity to the sun. When the sun shines directly, the hair quickly absorbs the sun energy. Therefore the body temperature will pull up and, do not measure the temperature at this time.



2. The ambient temperature need to be controlled between 15 to 35 degrees Celsius. Too low, or too high, measured body temperature has been unable to refer. Please control the ambient temperature in order to get the correct body temperature.
3. Different environment: When a person enters the room from outside, if the temperature gap between the two is too large, it needs to be delayed by about 5 minutes before testing temperature. For example, outdoor is 35 degrees Celsius, directly into the room for 25 degrees Celsius condition, Detect temperature immediately, the temperature will be incorrect.
4. For temperature detect mirror, it is recommended to power-on 5-10 minutes for warn up the system. Then, the detector could be work normally.

5. This product is mainly used to detect the temperature of the forehead. Other parts of the human body, the test will be incorrect.

Chinese website: <http://www.smartbridge-info.com>

English Website: <http://www.smartbridge-tech.com>